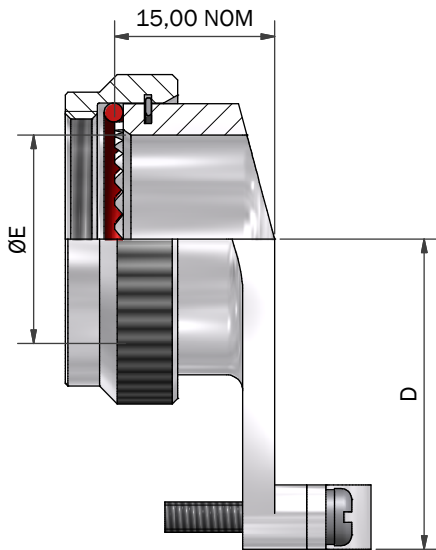
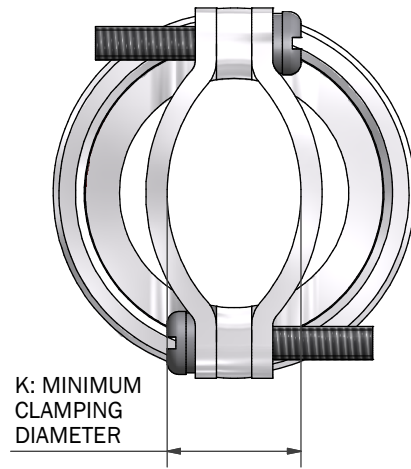
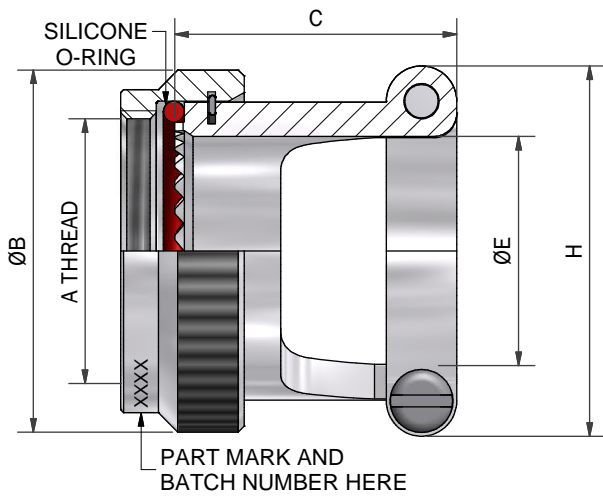
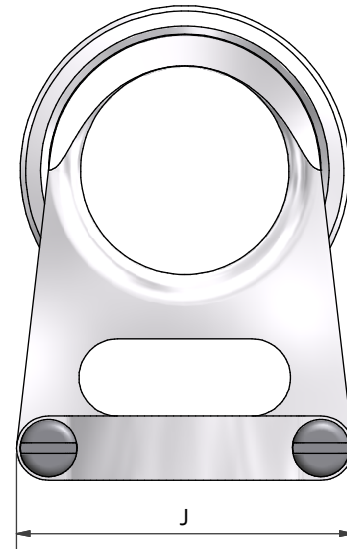


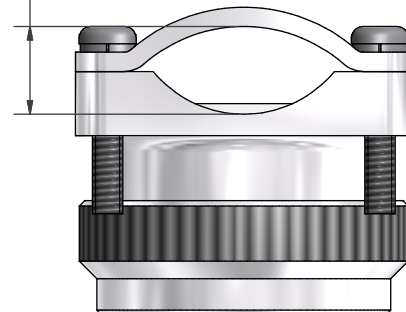
ANGLE 1



ANGLE 3



M: MINIMUM CLAMPING DIAMETER



NOTE
FASTENERS MATERIAL (STAINLESS STEEL)

DRAWN	J.CLARK	DATE 23/08/2010	3RD ANGLE PROJECTION NOT TO SCALE	POLAMCO WESTON LOCK LOWER BRISTOL ROAD BATH BA2 1EP	PAGE 1 OF 2	UNLESS OTHERWISE SPECIFIED ALL DIMENSIONS IN MILLIMETRES
SALES APPR			THIS DRAWING IS COPYRIGHT AND THE PROPERTY OF POLAMCO LTD IT MUST NOT BE COPIED, USED FOR MANUFACTURE OR OTHERWISE DISCLOSED WITHOUT PRIOR WRITTEN CONSENT OF THE COMPANY.	ASSY USED ON: MIL-DTL-38999 SERIES I & II	TITLE: STRAIN RELIEF ADAPTOR	MATERIAL ALUMINIUM ALLOY 6262
DESIGN APPR	K.SHEP	24/08/2010				NCAGE CODE U5792
QUAL APPR						DRAWING NO: P11400
ISSUE 3	DCR 3969					
WEIGHT	GENERAL TOL LINEAR +/-0.1MM ANGULAR +/- 1°		PART NUMBER: 96F SERIES			

TABLE 1

DASH NO.	SHELL SIZE SERIES I	SHELL SIZE SERIES II	A THREAD	ØB MAX	C MAX	D MAX	ØE MIN	H MAX	J MAX	K ±0,5 CLAMPING DIAMETER	M ±0,5 CLAMPING DIAMETER
08	09	08	7/16-28 UNEF	18,3	21,5	18,8	6,7	19,0	19,0	5,7	4,7
10	11	10	9/16-24 UNEF	21,5	21,5	21,1	10,1	22,2	22,2	6,9	5,3
12	13	12	11/16-24 UNEF	24,5	23,5	23,1	13,0	25,2	25,2	8,5	5,8
14	15	14	13/16-20 UNEF	27,8	23,5	25,5	16,1	28,5	28,5	10,4	7,7
16	17	16	15/16-20 UNEF	30,8	24,5	29,1	19,3	31,7	31,7	11,4	8,2
18	19	18	1 1/16-18 UNEF	34,1	27,5	35,1	21,8	34,9	34,9	14,9	9,7
20	21	20	1 3/16-18 UNEF	37,3	34,5	37,7	25,2	38,0	38,0	16,8	10,7
22	23	22	1 5/16-18 UNEF	40,5	34,5	39,8	28,1	42,8	41,2	23,9	11,8
24	25	24	1 7/16-18 UNEF	43,7	34,5	42,0	31,3	46,0	44,4	22,8	12,7

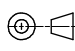

TABLE 2

CODE	FINISH
C	ELECTROLESS NICKEL
B	CADMIUM OLIVE DRAB OVER ELECTROLESS NICKEL
ZB	ZINC COBALT OLIVE DRAB OVER ELECTROLESS NICKEL
ZN	ZINC NICKEL BLACK PASSIVATE OVER ELECTROLESS NICKEL
G	BLACK ANODISE, SULPHURIC

LIST NOT EXHAUSTIVE, SEE PLATING TABLE FOR OTHER OPTIONS

96F1-16-1-C

SERIES _____
 CONNECTOR INTERFACE _____
 ANGLE _____
 DASH NO. (TABLE 1) _____
 MATERIAL _____
 ALUMINIUM ALLOY _____
 FINISH (TABLE 2) _____

DRAWN	J.CLARK	DATE 23/08/2010	 3RD ANGLE PROJECTION NOT TO SCALE	 POLAMCO WESTON LOCK LOWER BRISTOL ROAD BATH BA2 1EP	PAGE 2 OF 2	UNLESS OTHERWISE SPECIFIED ALL DIMENSIONS IN MILLIMETRES
SALES APPR						
DESIGN APPR	K.SHEP	24/08/2010	THIS DRAWING IS COPYRIGHT AND THE PROPERTY OF POLAMCO LTD IT MUST NOT BE COPIED, USED FOR MANUFACTURE OR OTHERWISE DISCLOSED WITHOUT PRIOR WRITTEN CONSENT OF THE COMPANY.	ASSY USED ON: MIL-DTL-38999 SERIES I & II TITLE: STRAIN RELIEF ADAPTOR	MATERIAL ALUMINIUM ALLOY 6262 NCAGE CODE U5792	
QUAL APPR						
ISSUE 3	DCR 3969					
WEIGHT	GENERAL TOL LINEAR +/-0.1MM ANGULAR +/- 1°		PART NUMBER:	96F SERIES	DRAWING NO:	P11400